

BACHIANAS BRASILEIRAS (Nº 1)

I. (INTRODUÇÃO - EMBOLADA)

ANIMADO

Musical score for the first section, "I. (INTRODUÇÃO - EMBOLADA)". It consists of five staves of music. The first staff (A) is in 2/4 time, marked *ff*. The second staff (B) is in 3/4 time, marked *ff*. The third staff (C) is in 2/4 time, marked *Solo*. The fourth staff (D) is in 2/4 time, marked *mf*. The fifth staff (E) is in 2/4 time, marked *MENO* and *mf*. The music features various rhythmic patterns, including triplets and sixteenth notes.

II. PRELUDIO (MODINHA)

Musical score for the second section, "II. PRELUDIO (MODINHA)". It consists of three staves of music. The first staff (2) is in 6/4 time, marked *mf* and *p*. The second staff (4) is in 4/4 time, marked *Piu mosso* and *p*. The third staff (7) is in 2/2 time, marked *ANDANTINO* and *mf*. The music features a variety of rhythmic patterns, including eighth notes and quarter notes.

III. FUGA - (CONVERSA)

UN POCO ANIMADO

Musical score for FUGA - (CONVERSA). It consists of two staves. The first staff is in G major, 4/4 time, with dynamics *mf* and *mf*. The second staff is in G major, 4/4 time, with dynamics *ff* and *mf*. There are circled letters 'A' and '12' at the beginning of the second staff.

BACHIANAS (Nº 9)

I. PRELUDIO - O CANTO DO CAPADÓCIO

Adagio

Musical score for PRELUDIO - O CANTO DO CAPADÓCIO. It consists of two staves. The first staff is in G major, 4/4 time, with dynamics *mf*. The second staff is in G major, 4/4 time, with dynamics *mf*. There are circled letters 'A' and '8' at the beginning of the second staff.

II. ARIA - O CANTO DA NOSSA TERRA

LARGO

Musical score for ARIA - O CANTO DA NOSSA TERRA. It consists of three staves. The first staff is in G major, 4/4 time, with dynamics *p*. The second staff is in G major, 4/4 time, with dynamics *mf* and *f*. The third staff is in G major, 4/4 time, with dynamics *mf*. There are circled letters 'A' and '5' at the beginning of the second staff. The word 'Saxofone' is written above the third staff.

III. DANSA - LEMBRANÇA DO SERTÃO

Andº Moderato

Musical score for DANSA - LEMBRANÇA DO SERTÃO. It consists of two staves. The first staff is in G major, 4/4 time, with dynamics *mf*. The second staff is in G major, 4/4 time, with dynamics *mf*. There is a circled letter 'A' at the beginning of the first staff.

BACHIANAS (Nº 3)
I. (PRELUDIO-PONTEIO)

Adagio

PiANO Solo

ORQUESTRA

Piu mosso

Fagote

II. FANTASIA-DEVANEIO

All: mod:to

PiANO Solo

ORQUESTR.

Piu mosso

PiANO Solo

CLARINETA

Cordas

III. ARIA - CANTIGA

5 VIVACE

Handwritten musical score for 'ARIA - CANTIGA'. It features five staves. The top staff is the melody, starting with a circled '5' and 'VIVACE'. It includes notes with accents and a circled '6' with a 'v' above it. The second staff is labeled 'cellos' and contains a large '7' with a diagonal line through it. The third and fourth staves contain accompaniment with various note values and dynamics like 'Pizz' and 'mf'. The bottom staff shows a bass line with a long note and a '0' below it.

IV. DANSA - MIUBINHO

Handwritten musical score for 'DANSA - MIUBINHO'. It consists of a single staff with a circled '1' at the beginning. The music features a series of eighth and sixteenth notes with accents, typical of a dance piece.

BACHIANAS (No. 5)

I. ARIA - CANTILENA

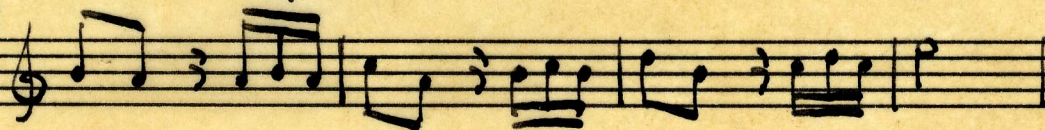
Handwritten musical score for 'ARIA - CANTILENA'. It features two staves. The top staff is marked 'ADAGIO' and 'Pizz'. The bottom staff is marked 'arco p' and 'mp'. The word 'cellos' is written on the left side. The music consists of flowing sixteenth-note passages.

Handwritten musical score for a melodic line, starting with a circled 'B'. It features a series of notes with a long slur over them, ending with a double bar line.

II. DANSA - (MARTELO)

Temas de passarinhos

(A)



(B)



(C)

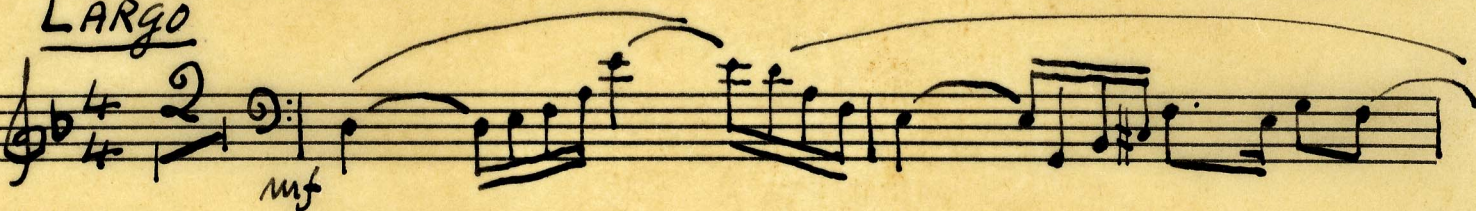


BACHIANAS (Nº 6)

I. ARIA - CHORO

LARGO

(A)



II. FANTASIA - FANTASIA

(B)

mf



BACHIANAS (Nº 7)

I. PRELUDIO - PONTEIO

ADAGIO

Contra

Pizz *mf*



① Fagote
mf

Oboes ④ Piu MOSSO

II. GIGA - Quadrilha caipira
All^{to} Scherzando

III. TOCATA - DESAFIO
ANDANTINO

IV. FUGA - CONVERSA
ANDANTE

BACHIANAS (Nº 8)

② ANDANTE I. PRELUDIO

mf

Musical notation for the first system of 'I. PRELUDIO'. It features a treble clef, a key signature of one flat (B-flat), and a 7/8 time signature. The music begins with a half rest followed by a series of eighth and quarter notes, some beamed together and some with slurs. The dynamic marking 'mf' is written below the first few notes.

II. ARIA - MODINHA

LARGO ①

mf

Musical notation for the first system of 'II. ARIA - MODINHA'. It consists of two staves. The top staff has a treble clef, a key signature of one flat, and a 3/4 time signature. It starts with a half rest followed by a series of quarter and eighth notes. The bottom staff has a bass clef and contains a series of eighth notes, some beamed in groups of three. The dynamic marking 'mf' is written between the staves.

⑦ PIU MOSSO

f

Musical notation for the first system of 'PIU MOSSO'. It features a treble clef, a key signature of one flat, and a 2/2 time signature. The music begins with a half note followed by a series of quarter notes. There are triplets of quarter notes. The dynamic marking 'f' is written below the first note.

⑧ f > ppp

Musical notation for the second system of 'PIU MOSSO'. It consists of two staves. The top staff has a treble clef and contains quarter notes, some beamed in groups of three. The bottom staff has a bass clef and contains eighth notes, some beamed in groups of three. The dynamic marking 'f > ppp' is written below the first few notes.

9
III. TOCATA - CATIRA batida

VIVACE

(12) MENO.
mf

POCO MODERATO ASAI MODERATO

IV. FUGA

mf

BACHIANAS (Nº 9)

I. PRELUDIO

VAGAROSO

1

mf

II. FUGA

10

Pouco apressado

Handwritten musical notation on a grand staff. The key signature has one flat (B-flat). The time signature is 11/8, with a sub-rhythm of 5/8 and 6/8. The notation includes various note values, rests, and dynamic markings such as *p* and accents (*>*).

Handwritten musical notation on a grand staff, continuing the piece with various note values and rests.

Handwritten musical notation on a grand staff, marked with a circled 2. It features a complex rhythmic pattern with many sixteenth notes and rests.

Handwritten musical notation on a grand staff, marked with a circled 10. It features a complex rhythmic pattern with many sixteenth notes and rests.

Fin. 1947 *MM*