

À amiga Francisca Braga

Às senhoras Antônia Prado

Próle do Bebê (n.º 2)

~~Os bebês~~
"Verde velhice"

1941

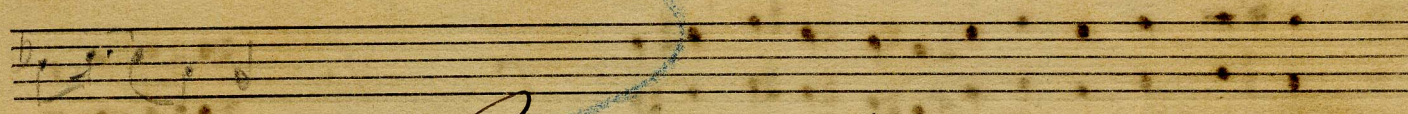
(Divertimento)



~~Para piano a 4 mãos~~

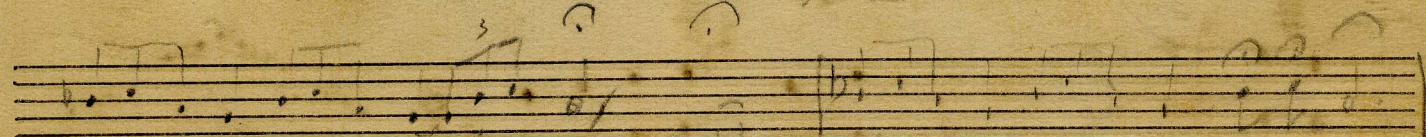


~~Y. Villa-Lobos~~



~~S. Paulo, 25/2/1922~~

~~Amiguinha caçula~~



~~Tururá, tururá, tururá~~

~~nao~~

~~(simile)~~

~~tururá~~

"Piede do Bebe N.º 2"

Reed. "O gatinho de papelão"
"le petit de carton"

Handwritten musical score for a reed instrument. The score is written on two systems of staves. The first system consists of a treble clef staff and a bass clef staff. The second system also consists of a treble clef staff and a bass clef staff. The music is in a key with one flat (B-flat) and a 2/4 time signature. The notation includes various note values, rests, and dynamic markings such as 'p' (piano) and 'rallent' (rallentando). There are also some handwritten annotations and corrections in the score.

fin

Seven sets of empty musical staves, each consisting of a treble clef staff and a bass clef staff, arranged vertically on the page.

2^a Piano

Verde Velhice

Lento

p. mysterioso e ligato

8. basso

mf affect.

p. all. ^{ti}

8. basso